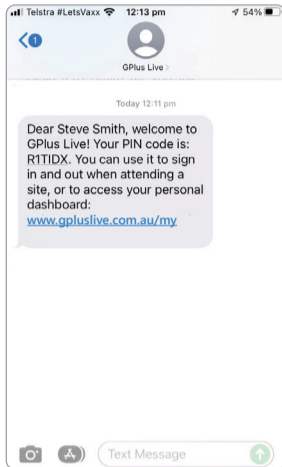


# Welcome to GPlus Live

# MY DASHBOARD

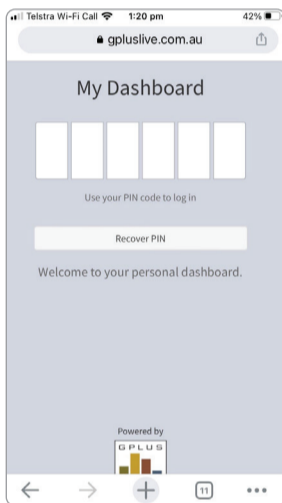


*My Dashboard* is your personalised mobile-accessible dashboard to interact with the site's modules.



1

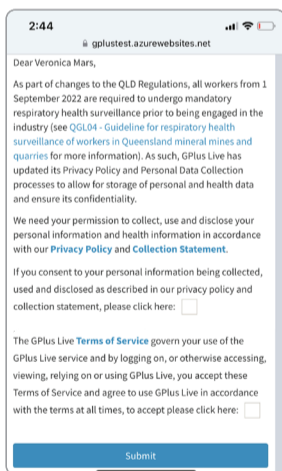
Access *My Dashboard* via text message or email received, or via: [www.gpluslive.com.au/my](http://www.gpluslive.com.au/my)



2

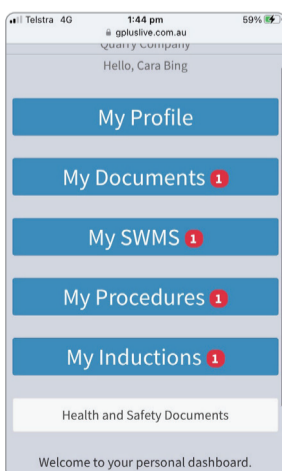
Enter your 6 digit code. Use the recover password button if you have misplaced your code.

GPlus Live uses two-factor authorisation to protect your data. If it is your first time logging in, you're on a new device, or 30 days have passed since logging in; you are required to enter a four digit code which you will receive via text.



3

Accept legal conditions (we may need to review our legal requirements occasionally, so you will have to re-accept).



4

You're in! Welcome to *My Dashboard*. Now you can complete any outstanding items (represented by red dots on the blue buttons. See the image for example).

**Need support? Call the GPlus Live team on 1800 GW PLUS (1800 497 587).**

